

CASE STUDY

Hilltop Companies Safely Delivers over 400,000 net tons of Aggregates for Power Stations

CHALLENGE

DP&L and Duke Energy needed sand, limestone, and gravel for landfill projects at multiple power stations. Over 400,000 net tons of aggregates were needed in a short time window and the locations were unable to accept such large deliveries safely due to space and access restrictions.

SOLUTION

R.B. Jergens Contractors (R.B. Jergens) managed the projects for the power companies. They reached out to Hilltop to collaborate on a creative solution to safely deliver the aggregates within the constraints. "Hilltop's reputation for high-quality product and excellent customer service made them the right choice. We knew we could rely on Hilltop for their ability to provide creative delivery solutions due to their integration and scale." said Kevin Harshberger, Vice President, R.B. Jergens Contractors.

APPROACH

In 2016, Hilltop and R.B. Jergens delivered 75,000 net tons of sand, gravel, and limestone to DP&L by creating a total solution package that allowed for the elimination of 16,000 truckloads traveling on a busy highway and minimized security concerns for the customer. Hilltop and R.B. Jergens coordinated a supply chain between multiple locations ending at the hard to access, highly secure delivery site. To avoid excessive truck traffic on the highway leading to the site and mitigate security concerns, Hilltop reached the location using an alternate route. The total solution delivery package involved multiple steps including barge loading, material transporting, vessel movement, barge unloading, material stockpiling, and truck reloading in order to safely deliver material to the site. The aggregates came from Hilltop's Patriot and Big Bend locations and Hilltop partnered with C&B Marine to barge the material into Hilltop's Aberdeen, Ohio unloading facility on the Ohio River. Hilltop provided a large area to stockpile the aggregate so R.B. Jergens could then



Situation at a Glance

- DP&L and Duke Energy needed over 400,000 net tons of aggregates safely delivered to their highly-secure power station landfill sites in a short time period
- R.B. Jergens Contractors selected Hilltop as the aggregate provider based on their ability to provide a creative solution to deliver a large amount of high-quality product safely
- Partnering with C&B Marine, Hilltop Companies and R.B. Jergens provided aggregates to two power plants on a just-in-time delivery schedule by transporting the material via barges reducing truck traffic on local highways
- Both projects were successfully completed within the short delivery times and on budget

Want to learn more about Hilltop capabilities? Contact us today!

Aggregates

(513) 684 - 8200

Ready-Mixed Concrete

(513) 621-1500

truck the material into the AES Ohio Generation DP&L Stuart Station landfill on a just-in-time basis.



Working again with C&B Marine in 2018 to transport the aggregate by barge, Hilltop safely provided 350,000 net tons of sand, gravel, and limestone from Hilltop's locations to the Duke Energy East Bend Power Station using

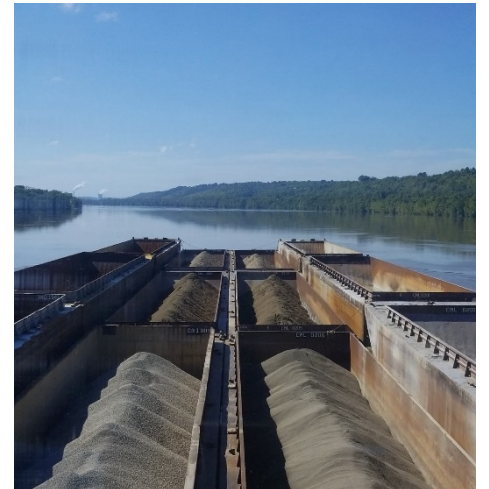
a similar delivery method. For this project, C&B Marine unloaded Hilltop material from barges directly into R.B. Jergens trucks. Rob Carlise of C&B Marine states, "We are proud that C&B Marine was able to help Hilltop transport such a large amount of aggregate safely to their customers. Using the river to transport material is long-established solution and eliminates excess traffic on surface roads." This process reduced truck traffic on the local highway, met the security needs of the customer, and allowed over 14,000 truckloads to arrive on site on a just-in-time basis to satisfy the delivery timing needs of the power station.

RESULTS

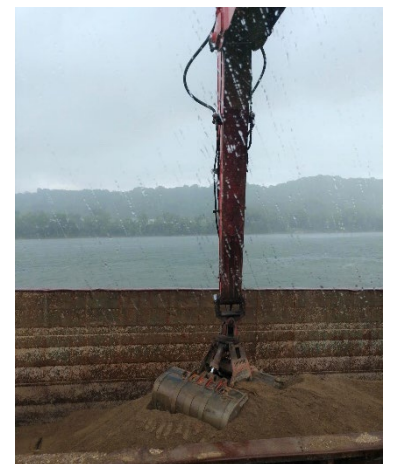
Both landfill projects were safely completed on time and within budget. Joe Richards, Hilltop's River Sales & Logistics Representative states "We are proud that we came up with a creative solution that met our customers' needs. Using the Ohio River as a mode of transportation and providing a stockpile location was a method that enabled both projects to be completed safely, on time, and within budget."



Loading the Barge



Towing Aggregate



Unloading the Barge